

# MONTHLY MEMBERSHIP PROGRESS REPORT

District 14 N

Results as of: 5/31/2026

GMT:

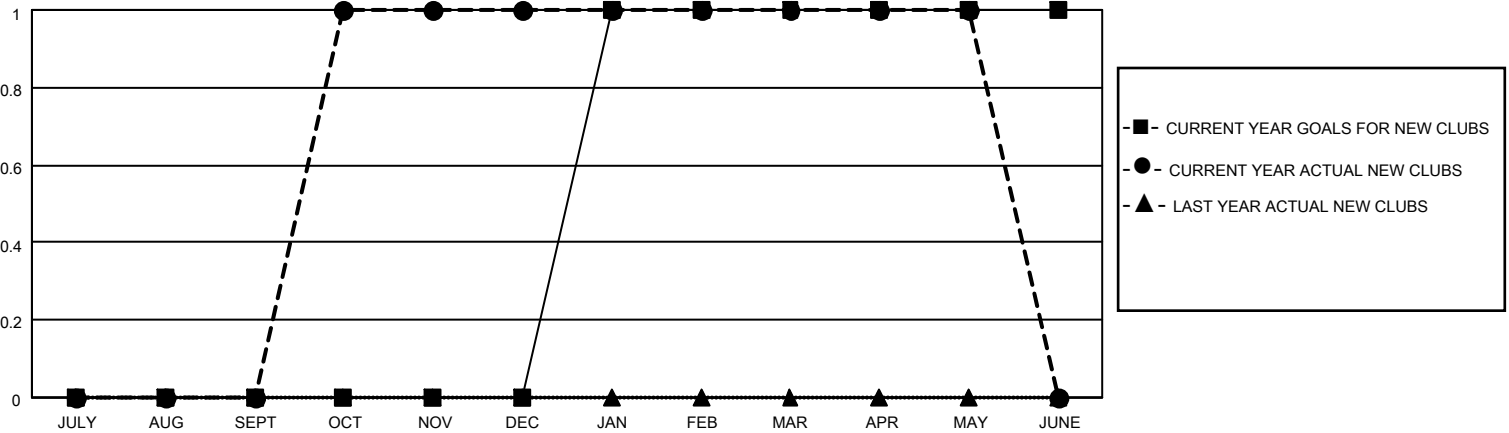
LOCATION PENNSYLVANIA

GMT CA

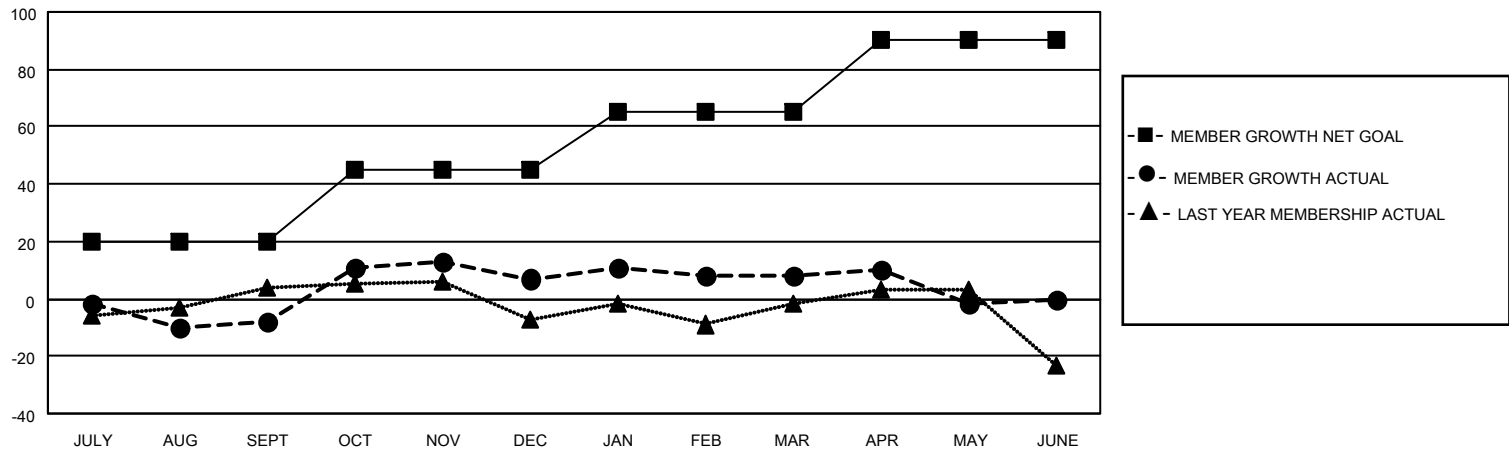
Clubs			
RESULTS FOR 2025-2026			
QUARTER	NEW CLUB GOAL	NEW CLUBS	DROPPED CLUBS
JULY/AUG/SEPT	0	0	1
OCT/NOV/DEC	0	1	1
JAN/FEB/MAR	1	0	0
APR/MAY/JUNE	0	0	0

Members			
RESULTS FOR 2025-2026			
QUARTER	MEMBER GROWTH NET GOAL	MEMBER GROWTH ACTUAL	DROPPED MEMBERS ACTUAL (including transfers)
JULY/AUG/SEPT	20	20	27
OCT/NOV/DEC	25	31	16
JAN/FEB/MAR	20	11	9
APR/MAY/JUNE	25	12	22

GOALS AND ACTUAL NEW CLUBS CUMULATIVE



GOALS AND ACTUAL MEMBERS CUMULATIVE



DROPPED CLUBS: 2	17 CLUBS OF 38 ADDED 1 OR MORE NEW MEMBERS	<b>GENDER DISTRIBUTION</b> MALE 634 (68.25%) FEMALE 295 (31.75%)
<b>DROPPED MEMBERS</b> DECEASED 16 CLUB CANCELLED 6 OTHER 52 TOTAL 74	<a href="#">CLICK HERE FOR CUMULATIVE MEMBERSHIP DATA</a>	TOTAL FAMILY UNIT MEMBERS 184 FAMILY MEMBERS PAYING HALF DUES 95